

# Böcker

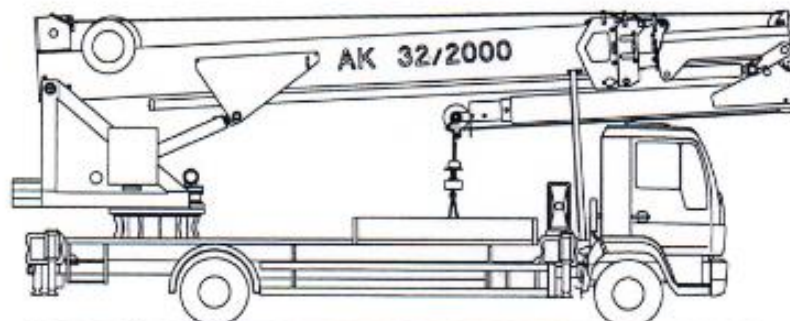
CE

Bedienungs- und  
Wartungsanleitung

AK 32/2000 SPS

Baujahr : ..... 2002  
Serien-Nr. : ..... 30553  
Weltfzg.-Nr. LKW : ZCFA1GD1102375954  
Elektroschaltplan : 802 000 090 000  
Hydraulikschaltplan : 357 000 100 001  
Funkanlage : ..... FST 717

Kunde : ..... nv TRAVO sa



05/1999

Albert Böcker GmbH & Co.KG Maschinenbau  
Lippestraße 69  
59368 Werne

Postfach 1153  
59354 Werne

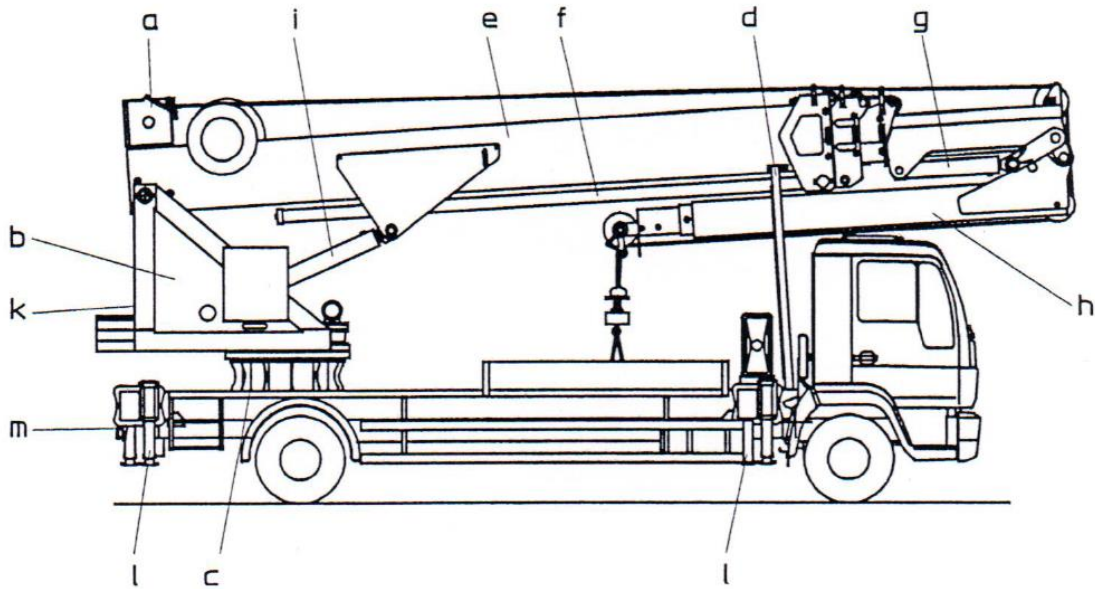
Telefon 02389/79890  
Telefax 02389/532204

Eingetragen in Registergericht  
Lünen als GmbH & Co.KG  
KG: HRA 1001  
P.h.G. : A. Böcker GmbH  
HR B 63

 **Böcker**  
Kran- und Aufzugstechnik

### 3. Technical Description

#### 3.1 Technical specifications



A – Winch Motor

B – Boom Pillar

C – Turntable

D – Scaffold

E – Boom Base Section

F – Telescopic cylinder

G – Boom Cylinders

H - Boom

I – Telescopic arm cylinder

K – Proportional Valve

L – Outriggers

M – Steering Block Support

#### 3.1.1 Main Dimensions

Telescopic arm angle

Approx. 88 °

Cantilever angle

Approx. 160 °

Swivel range

Approx. 620 °

Overall Length

Approx. 9,04 m

Overall Width

Approx. 2,55 m

Spreading width max

Approx. 5,54 m

Spreading width one-sided

Approx. 4,00 m

Basic extendible

Approx. 4,30 m

Extendable up to

8,50 m

Stroke speed max

Approx. 46 m/min

#### 3.1.2 Weight

Permissible total weight of the vehicle

11,99 t

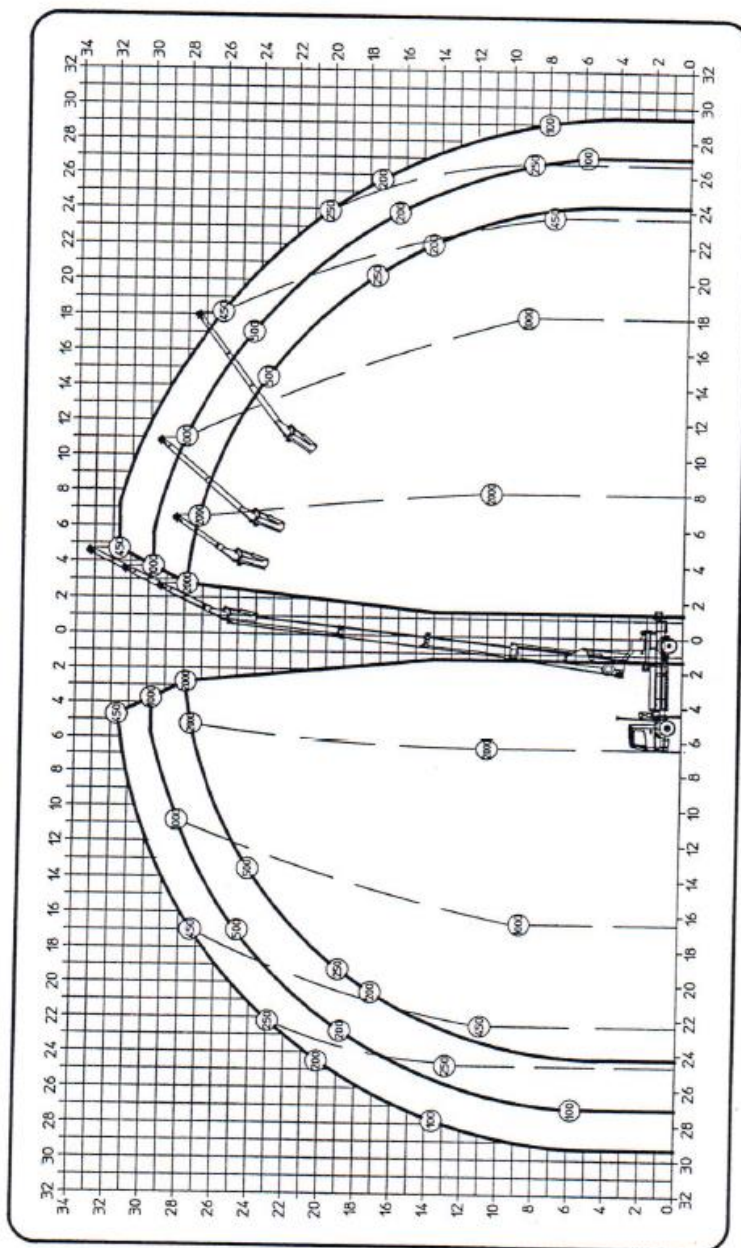
Construction weight

7,47 t

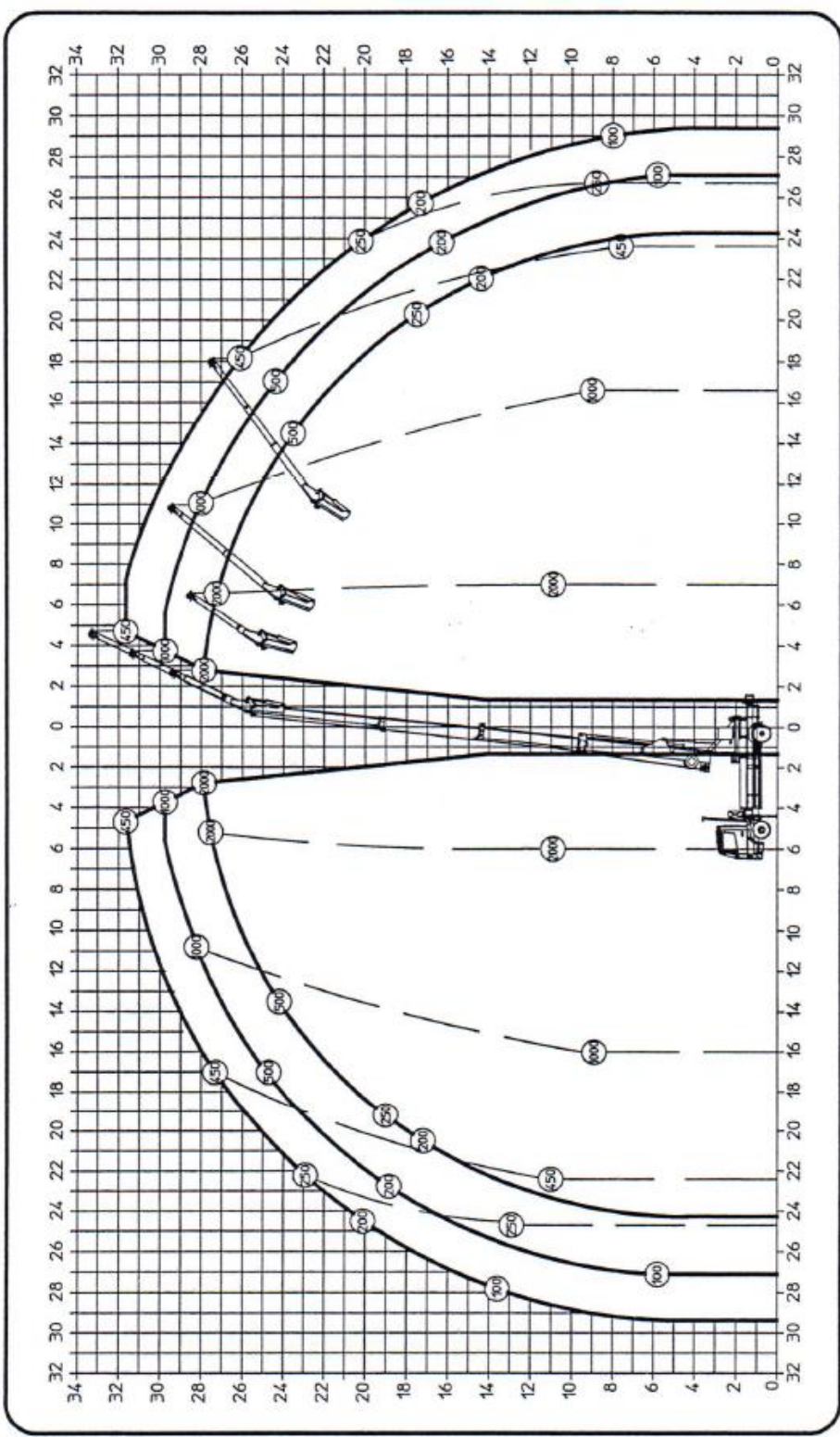
### 3.1.3 Max range of crane operation

	<u>AK 32/2000 SPS</u>	<u>AK32/2000 SPS ahy.</u>
2000 kg Load capacity	Approx. 8,00 m	Approx. 7,00 m
1000 kg Load capacity	Approx. 18,60 m	Approx. 16,60 m
450 kg Load capacity	Approx. 24,80 m	Approx. 23,80 m
200 kg Load capacity	Approx. 28,00 m	Approx. 27,00 m
Working height up to the boom	Approx. 25,00 m	Approx. 25,00 m
Hook height max	Approx. 32,00 m	Approx. 32,00m

AK32/2000SPS



Dimensions and design specifications are subject to change. Dimensions in meters (m)



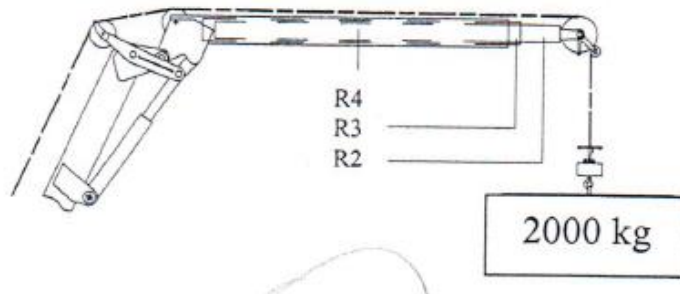
Dimensions and design specifications are subject to change. Dimensions in meters



### 3.2.3 Load Limiter

The max payload of the crane is limited by pressure relief valves.  
Adjustment of the telescopic tubes 2-3 allows the following load position

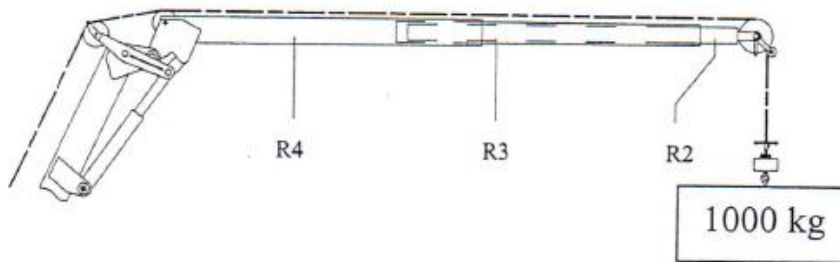
Telescopic tube 2+3 not extended, max. Load capacity 2000 kg



R = Section

Image 3-5

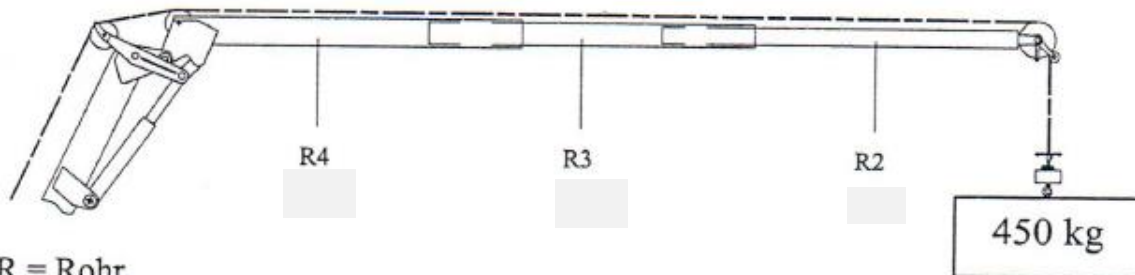
In the below situation, the maximum load of the winch is 1000kg (image 3-6)



R = Section

Image 3-6

In the below situation, the maximum load of the winch is 450kg (image 3-7)

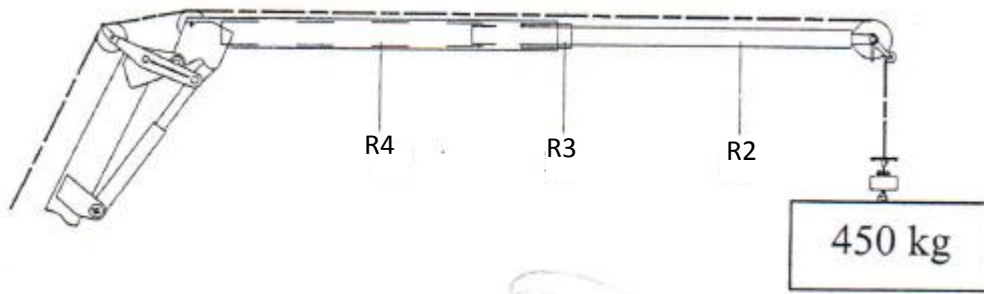


R = Rohr

R = Section

Image 3-7

In the below situation, the maximum load of the winch is 450kg (Image 3-9)



R = Section

Image 3-8